

TECHNICAL DATA SHEET

Inclusive In-Ground Trampoline

Accessible In-Ground Trampoline – Model WH 150/200

Overall dimensions: 150 × 200 cm

Jumping mat: 100 × 150 cm (visible area: 100 × 120 cm)

Working deflection: 20 ± 5 cm

Designed for wheelchair users with reinforced construction and a steel/EPDM rubber access ramp.

Unit weight: 165 kg



Accessible In-Ground Trampoline – Model WH 150/250

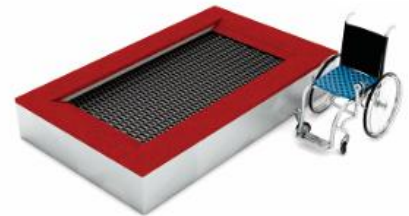
Overall dimensions: 150 × 250 cm

Jumping mat: 100 × 200 cm (visible area: 100 × 170 cm)

Working deflection: 25 ± 5 cm

Designed for wheelchair users with reinforced construction and a steel/EPDM rubber access ramp.

Unit weight: 195 kg



Accessible In-Ground Trampoline – Model WH 150/300

Overall dimensions: 150 × 300 cm

Jumping mat: 100 × 250 cm (visible area: 100 × 220 cm)

Working deflection: 30 ± 5 cm

Designed for wheelchair users with reinforced construction and a steel/EPDM rubber access ramp.

Unit weight: 215 kg

Accessible In-Ground Trampoline – Model WH 150/450

Overall dimensions: 150 × 450 cm

Jumping mat: 100 × 400 cm (visible area: 100 × 370 cm)

Working deflection: 30 ± 5 cm

Designed for wheelchair users with reinforced construction and a steel/EPDM rubber access ramp.

Unit weight: 245 kg

Accessible In-Ground Trampoline – Model WH 150/500

Overall dimensions: 150 × 500 cm

Jumping mat: 100 × 450 cm (visible area: 100 × 420 cm)

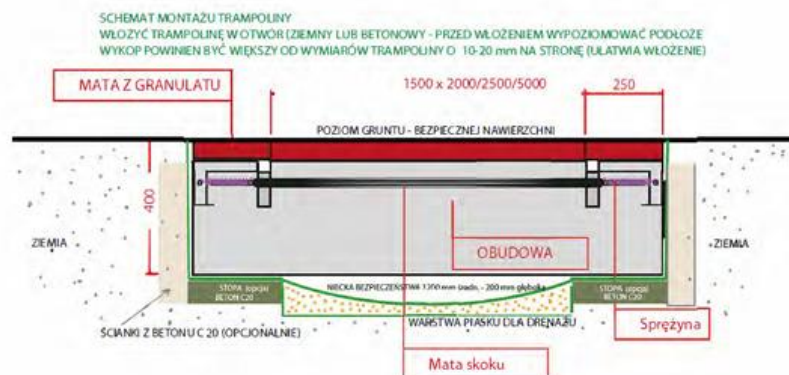
Working deflection: 30 ± 5 cm

Designed for wheelchair users with reinforced construction and a steel/EPDM rubber access ramp.

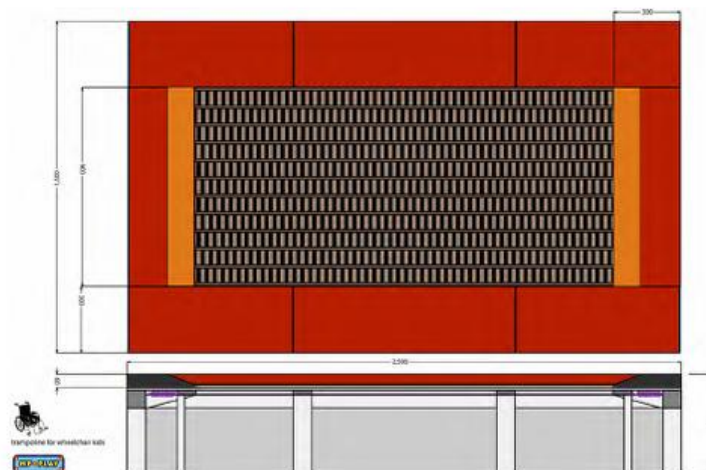
Unit weight: 285 kg

Technical Specifications

- Frame: galvanized 2.5 mm steel sheet, welded and bolted.
- Maximum rebound above the suspended plane (69.5 kg dropped from 900 mm): 600 mm.
- Minimum clearance below the suspended plane: 230 mm.
- Jumping mat made of polypropylene/polyamide slats on stainless steel cables with reinforced spring system.
- Jumping mat opening: 29.5 × 60 mm.
- Galvanized steel cover with Polflex polyurethane-rubber protective panels.
- Minimum safety zone: 2 m around the equipment.
- Free fall height: 0.9 m plus the deflection of the jumping mat.
- Recommended age: 3 years and above.
- Capacity: 1 wheelchair user with an accompanying person.
- Installation depth: 0.40 m.
- Vandal-resistant construction.
- Certified according to EN 1176-1:2017 and TÜV.



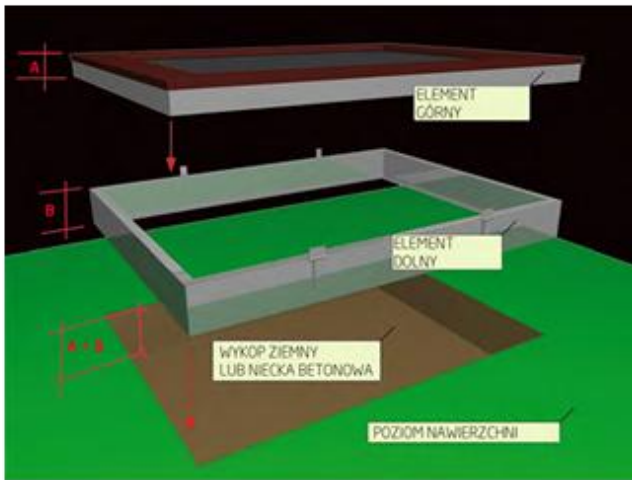
Strefa bezpieczeństwa 200 cm wokół urządzenia.



Materiał wykonania: gipsowa płytka GIPS lub GIPS/STYROM
 Wymiary: 400x400 mm
 Ciężar: 10 kg
 Wysokość: 40 mm



Sposób montażu



Dostęp dla konserwacji

