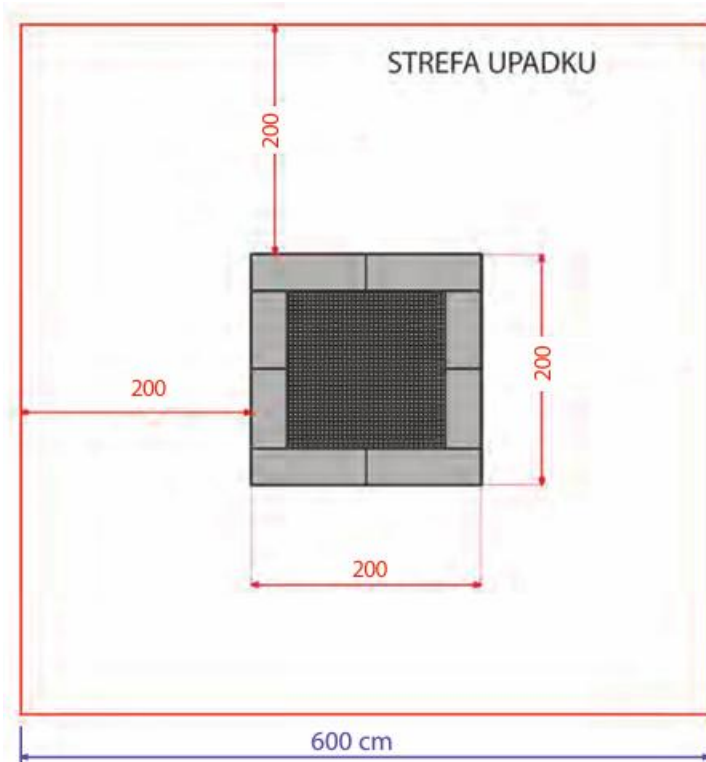
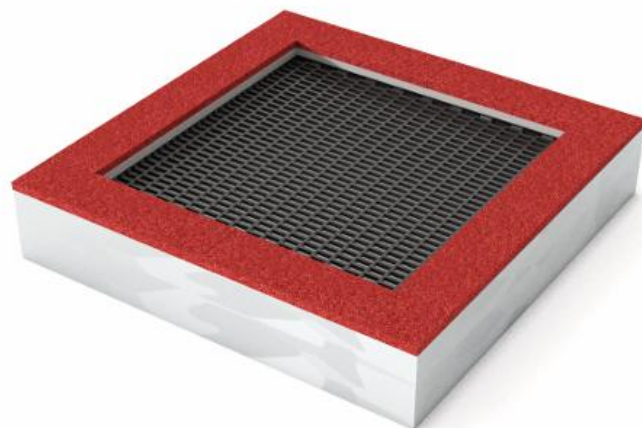


TECHNICAL DATA SHEET

IN-GROUND TRAMPOLINE TZMPP-200

Technical Specifications

- **Frame construction:** Galvanized steel profiles and galvanized sheet steel.
- **Jumping mat:** Plastic slats threaded onto a $\varnothing 6$ mm galvanized steel cable with PVC coating. Cable ends are fitted with thimbles and connected to TÜV-certified galvanized steel springs mounted inside the frame.
- **Protective edging:** Safety edging made of EPDM/SBR rubber granulate.
- **Mat deflection:** 20–23 cm.
- **Minimum free fall height:** 0.9 m plus the distance from the jumping mat to its lowest deflection point.
- **Jumping mat opening:** 29.5 × 60 mm.
- **Maximum rebound:** 600 mm (69.5 kg test mass dropped from 900 mm).
- **Minimum clearance beneath the mat:** 230 mm (69.5 kg test mass dropped from 900 mm).
- **Recommended age:** 3 years and above.
- **Users:** 2 users (1 recommended).
- **Installation depth:** Approx. 0.45 m.
- **Safety zone:** 2 m around the trampoline (600 × 600 cm).
- **Overall dimensions:** 200 × 200 × 40 cm. Jumping area: 150 × 150 cm.
- **Weight:** 175 kg.
- **Permissible static load:** 200 kg.
- **Certification:** Complies with EN 1176-1:2017 and TÜV requirements.
- **Spring attachment:** TÜV-certified springs attached to galvanized hooks welded inside the frame.
- **Maintenance:** Maintenance access by removing the springs with a dedicated tool or lifting the upper frame.



MAIN DIMENSIONS & INSTALLATION

Installation Instructions

1. Place the trampoline into the prepared ground or concrete opening.
2. Level the base before installation.
3. The excavation should be 30–40 mm larger than the trampoline on each side to facilitate installation.

