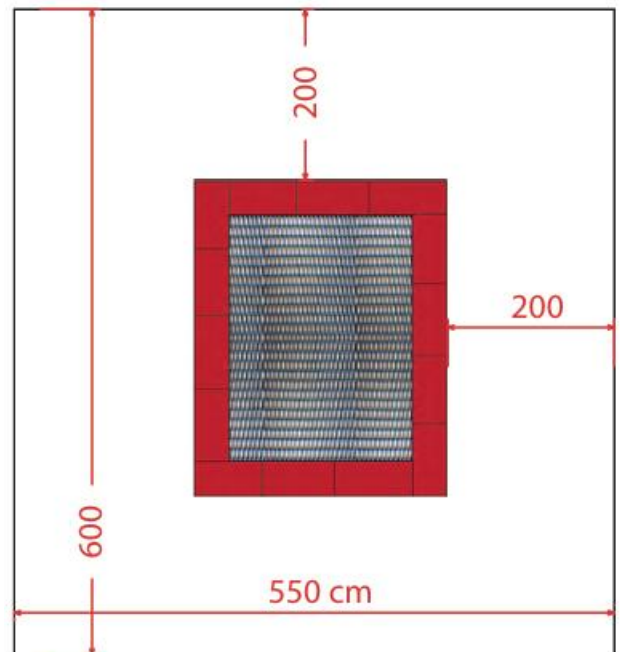
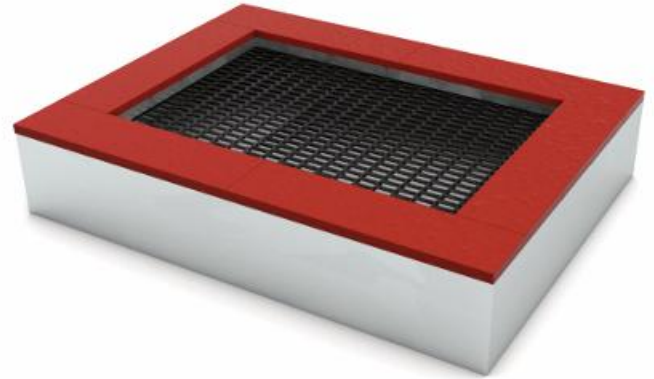


TECHNICAL DATA SHEET

IN-GROUND TRAMPOLINE TZMPP-150×200

Technical Specifications

- **Frame construction:** Galvanized steel profiles and galvanized steel sheet.
- **Jumping mat:** Plastic slats threaded onto a $\varnothing 6$ mm galvanized steel cable with PVC coating. The cables terminate in thimbles and are connected to TÜV-certified galvanized steel springs mounted inside the frame.
- **Protective edging:** EPDM/SBR rubber granulate safety panels around the jumping mat.
- **Mat deflection:** 20–25 ± 3 cm.
- **Minimum free fall height:** 0.9 m plus the distance from the jumping mat to its lowest deflected point.
- **Jumping mat opening:** 29.5 \times 60 mm.
- **Maximum rebound:** 600 mm (69.5 kg test mass dropped from 900 mm).
- **Minimum clearance beneath mat:** 230 mm (69.5 kg test mass dropped from 900 mm).
- **Age:** 3+ years.
- **Users:** 2 (1 recommended).
- **Installation depth:** Approx. 0.45 m.
- **Safety zone:** 2.0 m around the trampoline (600 \times 550 cm).
- **Permissible load:** 210 kg static, 120 kg dynamic.
- **Overall dimensions:** 200 \times 150 \times 40 cm (L \times W \times H).
Jumping area: 150 \times 100 cm.
- **Spring attachment:** TÜV-certified springs attached to galvanized hooks welded inside the frame. Maintenance access is possible by removing the springs with a dedicated tool or lifting the upper frame.
- **Weight:** 165 kg.
- **Certification:** Complies with EN 1176-1:2017 and TÜV requirements.



MAIN DIMENSIONS & INSTALLATION

- Overall dimensions: 1500 × 2000 mm.

Installation Instructions

1. Prepare a ground or concrete opening.
2. Level the base before installing the trampoline.
3. The excavation should be 30–40 mm larger than the outer dimensions of the trampoline on each side to facilitate installation.